

An abstract painting featuring a dense, intricate texture of fine, overlapping brushstrokes. The central area is dominated by light, greyish-white strokes, creating a sense of depth and movement. This central field is framed by vibrant, saturated colors: deep reds and oranges at the top right, dark blues and purples at the bottom, and various shades of pink and purple on the left. The overall effect is one of dynamic energy and complex visual information.

Paesaggi abituali



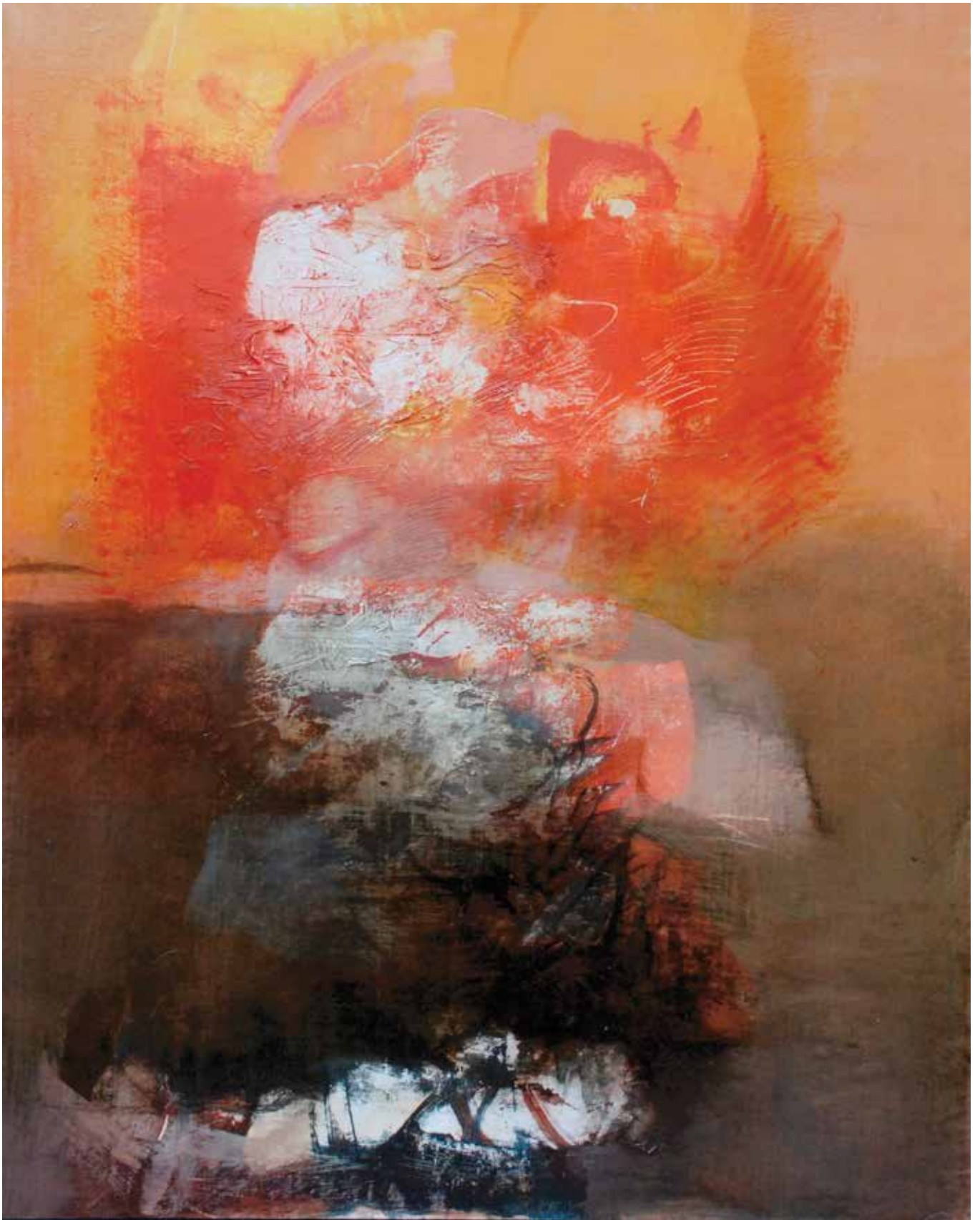
Improvvisa nevicata, 2013. Acrilico su tela, 165x123 cm



Aria d'autunno, 2013. Tecnica mista su tela, 150x150 cm



Fotogramma d'inverno, 2016. Acrilico su tela, 100x120 cm



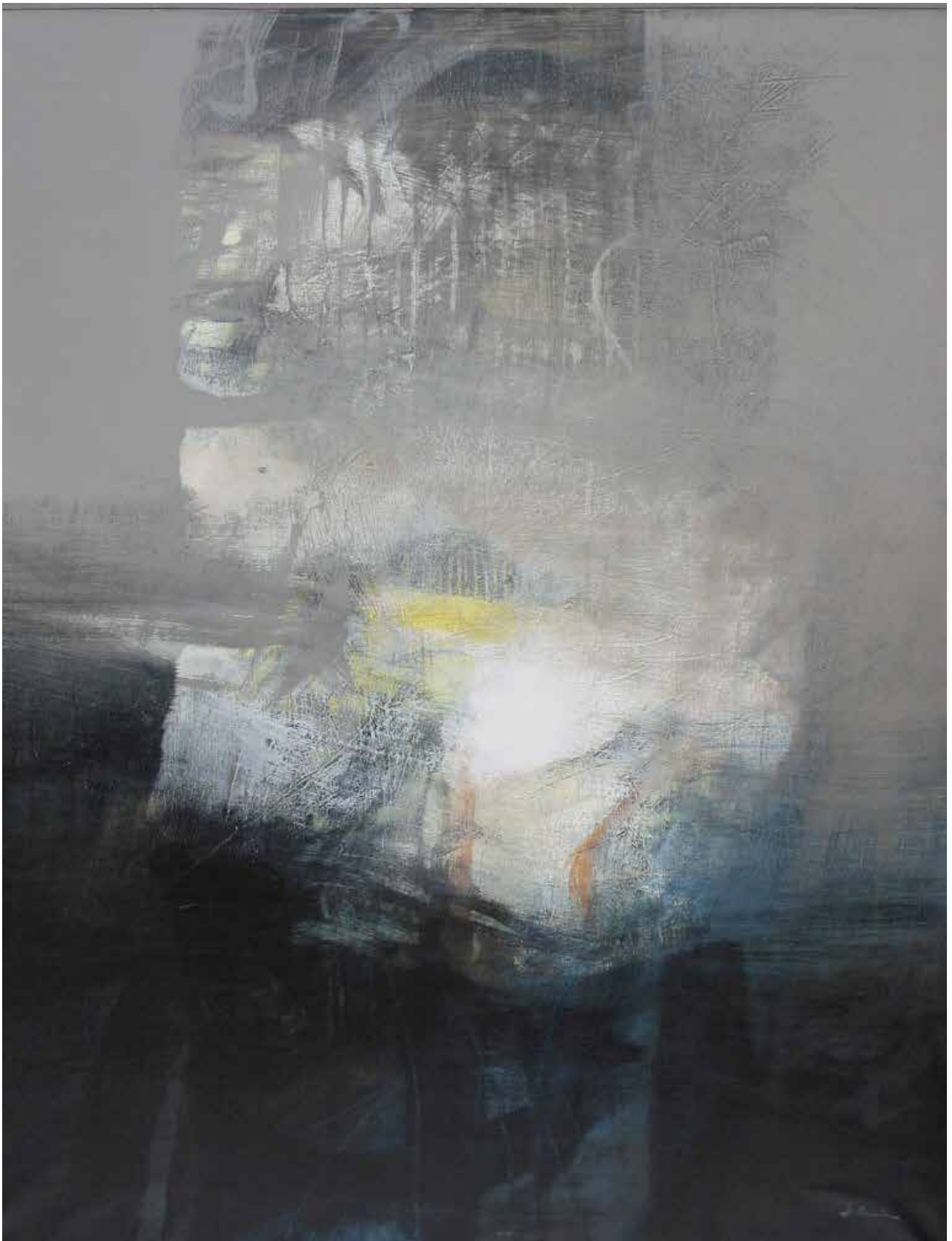
Verso sera, 2015, tecnica mista su tela, 100x80 cm



Il giusto peso, 2006. Tecnica mista su tela, 111x90 cm



Tacite atmosfere, 2010. Tecnica mista su tela, 100x120 cm



Paesaggio sospeso, 2003. Acrilico su tela , 120x100 cm



Fotogramma d'inverno - dittico - 2013. Tecnica mista su tela, 110x110 cm+ 110x55 cm



Fotogramma d'inverno, 2013. Tecnica mista su tela - 68,5x71,5 cm copia



Senza rumore, 2008. Tecnica mista su tela, 100x120 cm